

# Landscape

MIDDLE EAST | MAY 2013





# Contents

May 2013- Issue 71



14 Luxury Residential Village  
Quartier in Beirut



20 Al Khobar Waterfront, Saudi  
Arabia

28 Mission & design concept,  
Place Lalla Yeddouna

34 Shades of green

40 Sacramento... the city of trees

44 Landscape Architecture of  
Saffire

50 The Avenue

56 Interview with Nora Aridi

60 Palomar Medical Center Re-  
Connects Nature with Healing



## CORNICHE PARK

# Al Khobar Waterfront Saudi Arabia

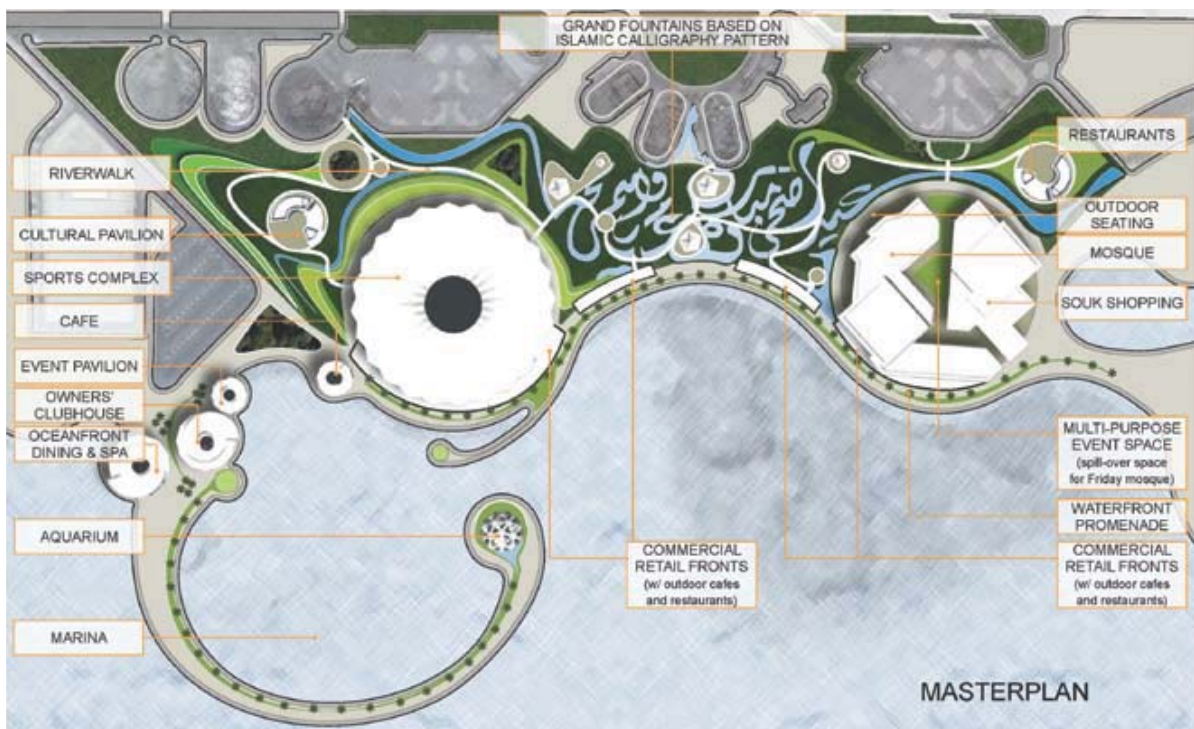
**A**l Khobar Waterfront is located on Amir Turki Street in the public parks of the corniche area of Al Khobar, a vibrant commercial district, surrounded by five star hotels, restaurants and shopping centers. Defining a new dimension in tourism and recreational services, it is the first mixed leisure entertainment and recreational development in the oil rich Eastern Province of the Kingdom of Saudi Arabia, providing over 1 million sq ft of mixed-use space and comprising of the following components:

**Traditional Souk** – A mix of retail & dining spaces within a traditional Arabian setting, areas for special events, a museum and traditional courtyards.

**Sports Complex** – Designed to host the first ice hockey & skating arena in the province with a mix of other sports recreation, entertainment and eateries.

**Marina & Club** – Set to be one of the most luxurious leisure facilities in the whole of the Kingdom, it is designed to host yachts and exclusive wellness & dining spaces.

While the project's three components provide a unique blend of activities that appeal to a wide target audience, a one-of-a-kind destination is created that effectively draws patrons from a variety of overlapping markets during different hours of the day within a stimulating pedestrian environment.







SHADED WATERFRONT PROMENADE WITH OCEAN VIEWS

TREE-LINED WATERFRONT with commercial retail fronts, cafes & restaurants w/ outdoor seating



## Quality Lit Flowerpots

**Bloom! is simple but classy design: a flowerpot doubling as light. Use at homes, offices, hotels, beaches or large public spaces – both indoors and outdoors. Conforms to strict European specifications. Includes energy saving light bulbs, can be coloured.**

HEIGHT	DIA TOP	WEIGHT	LIGHT	BULBS	DRAIN
40 CM	44 CM	4 KG	Yes	2 x 10 watt	No
60 CM	66 CM	10 KG	Yes	2 x 11 watt	Yes
90 CM	99 CM	24 KG	Yes	2 x 18 watt	Yes
100 CM	110 CM	28 KG	Yes	2 x 23 watt	Yes

  
 lifestyle brands • event rentals

Desert River LLC, Tel +971 4 323 3636, Fax +971 4 323 3686  
**More funky products and planters available on [DesertRiver.com](http://DesertRiver.com)**



# CORNICHE PARK

## LANDSCAPE INSPIRATION:

# Arabic Calligraphy

The inspiration for the landscape is based on the complex organizational patterns of Islamic art, which are particularly well expressed in the art forms of calligraphy and geometry. Calligraphy and geometry are both ancient Islamic art forms that are intimately connected with the disciplines of architecture and landscape design. Both art forms have most recently inspired dynamic hyper-contemporary morphologies and innovative design.

As such, these art forms are traditional and cutting-edge; sophisticated and timeless; enigmatic yet evocative; non-representational and intuitive. Both—calligraphy and geometry—are therefore conducive to a multitude of contemporary adaptations and applications. These patterns inform the landscape design of the Al Khobar Waterfront on multiple scales: From the organization of the pedestrian flow on the landscape, to the detailing of the public programs, down to the pattern of the pavements. When seen from above, people will read the calligraphy as an emblem, while at ground level, the pedestrian will discover a multitude of interlinked Arabic references and meanings.



## THEMATIC GARDENS WITH COMMERCIAL AMENITIES

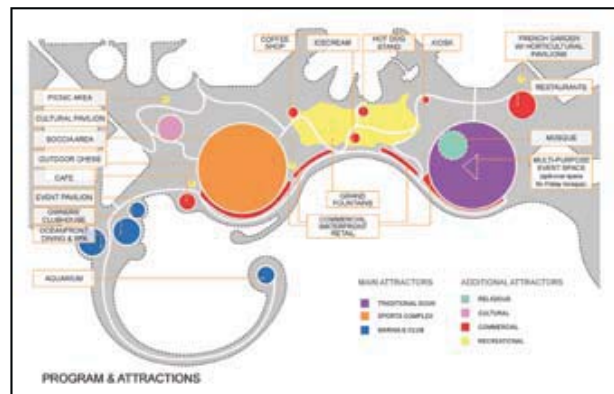
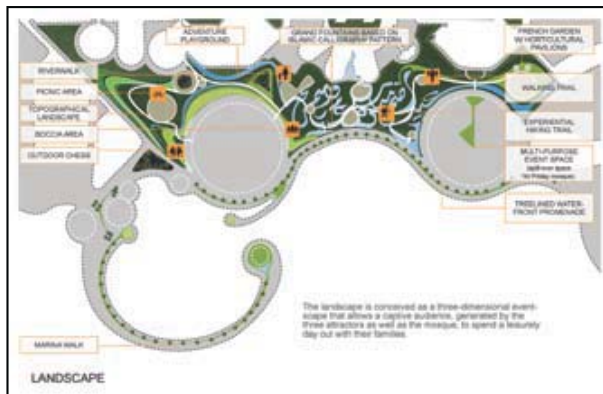


FRENCH GARDENS w/ HORTICULTURAL PAVILIONS

# CORNICHE PARK

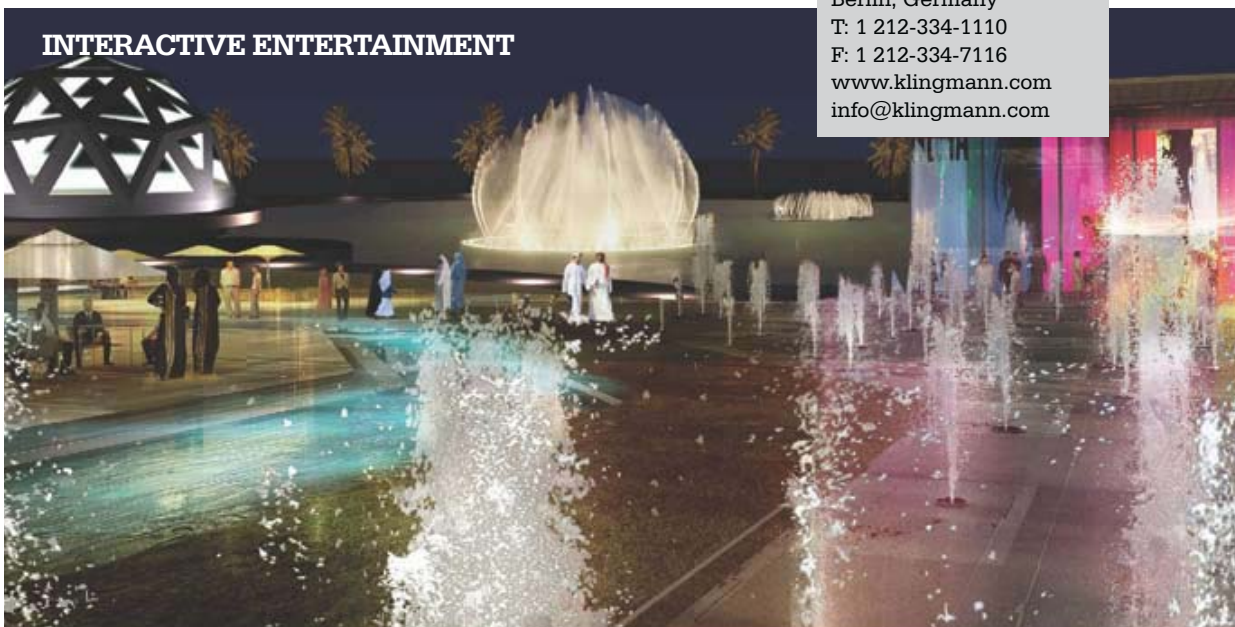
## LANDSCAPE DESIGN & PLACEMAKING: Experiential Waterfront

- The creation of a connective landscape that merges three programmatic components into one destination
- Integration of indoor and outdoor programmatic elements and public attractions
- Addition of landscape features and commercial and cultural amenities situated between The Marina and Sports facility, and between the Sports facility and Old Town.
- Seamless transition from parking to destination
- Development of wayfinding system that establishes a cohesive identity within and between Sports, Marina, Old Town, and Parking facilities
- Design of unique street furniture such as benches, lighting, paving, that give the destination a unique brand identity



- Project: **Al khobar Waterfront**
- Location: **Eastern Province, Saudi Arabia**
- Project Area: **100,000 M2**
- Project Scope: **Landscape Design/Concept**
- Project Type: **Souk, Sports Complex, Marina**
- Company: **Souk, Sports Complex, Marina**

**KLINGMANN**  
ARCHITECTS + BRAND  
CONSULTANTS  
401 Broadway, Suite 2102  
New York, NY 10013  
Rainweg 4, 12527  
Berlin, Germany  
T: 1 212-334-1110  
F: 1 212-334-7116  
[www.klingmann.com](http://www.klingmann.com)  
[info@klingmann.com](mailto:info@klingmann.com)



GRAND FOUNTAINS & WATERSCAPE based on Islamic calligraphy  
animated at different hours during the day and lit at night



## CULTURAL DESTINATION



Street level river 1

# Bin Landoun the bridging of 2 cities



Birds eye view



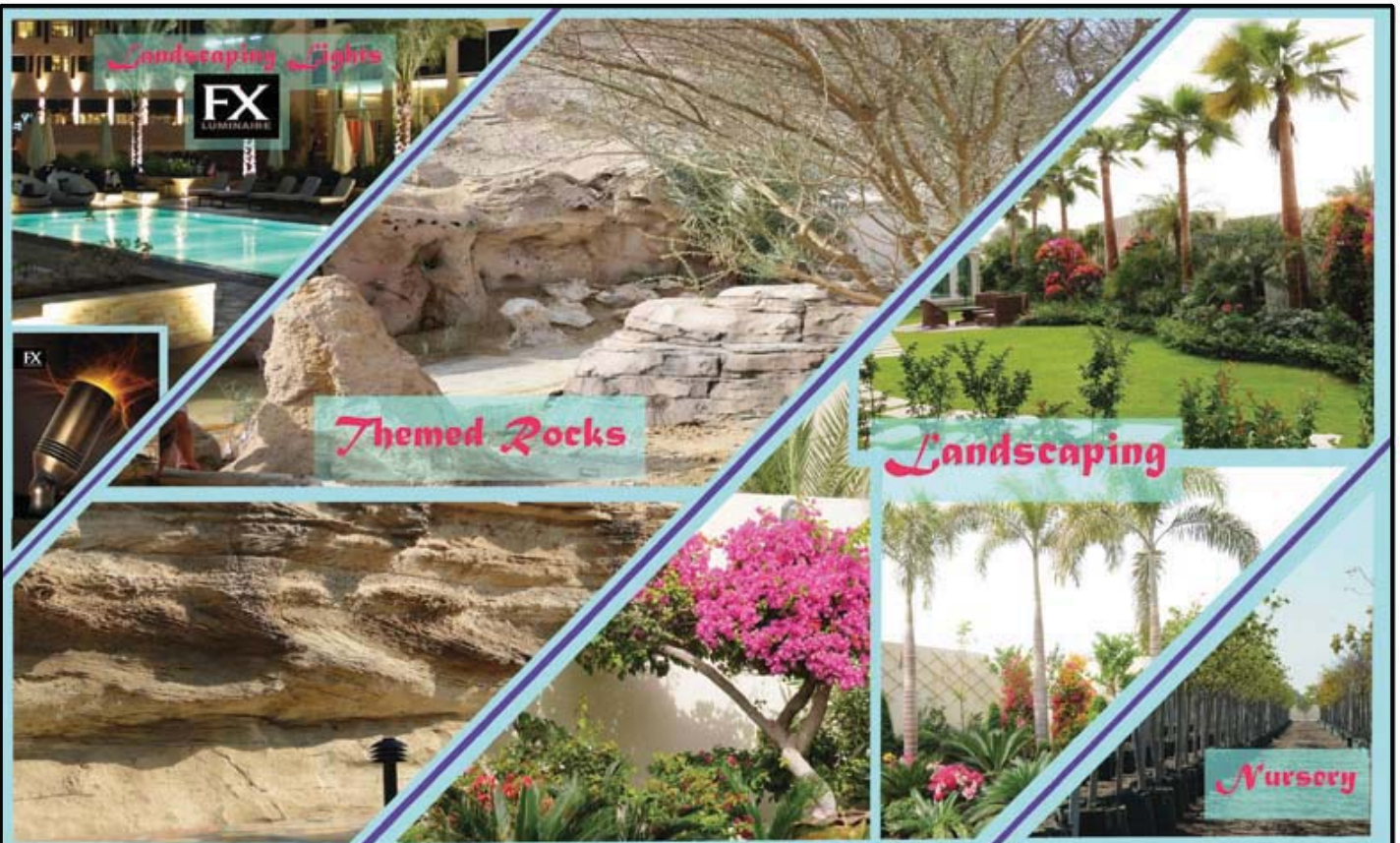
**T**he creation of a vibrant mixed-use urban center for the community of Place Lalla Yeddouna, a cultural destination for visitors and tourists, and an economic catalyst for artisan development. The key concept of the design is to bridge the two quarters of Place Lalla Yeddouna with a unifying public space that opens up the area and bridges both riverfronts. This place-based design enhances the relationships between visitors, artisans and residents by connecting Place Lalla Yeddouna on the western side of the river with two new plazas on the eastern side, providing more access points across the river that make accessibility more convenient. The design and development process will be participatory by both the local labor and artisans of the Medina, and will

result in a solution that truly belongs to Place Lalla Yeddouna. New public spaces will be created that encourage economic vibrancy where artisans can interact with tourists for sales, that provide better accessibility for the handicapped and emergency vehicles, and which both residents and visitors can enjoy. A continuous river walk will connect the adjacent context to the site and enhance the river walk as a public space where residents and tourists alike can relax and walk along the river. To this effect, the north half of the river walks will be renovated to its original condition with a clearly defined embankment. South of the bridge, the river walk will be more naturalistic in feel and enhanced with integrated steps and rocks for seating, planters and trees. The main plaza will highlight the existing fountain

and mulberry tree by adding minimal urban elements including benches and date palm trees that do not obscure the historical facades yet provide shading. The new eastern plazas will be hardscape with sandstone pavers and will be planted with date palms and ash trees. Small fountains and street furniture will line the plazas.

### **HOTEL AT PLACE LALLA YEDDOUNA**

The hotel will serve as a gateway building to the plaza and will help Place Lalla Yeddouna grow as a commercial center. Located at the northwest corner of the Bin Lamdoun bridge, it will provide tourists and visitors with direct access to the river walk and will open onto the plaza providing immediate access to artisan's galleries and workshops. The hotel will consist



*Imagineering is a dynamic and innovative company set up to meet the challenges of the modern market by providing clients with creative design and application solutions.*

P.O. Box: 113445, Abu Dhabi, UAE • Tel: +971 2 6727888 • Fax: +971 2 6727444 • email: [info@imagineeringad.com](mailto:info@imagineeringad.com)





## CULTURAL DESTINATION



of the lobby on the plaza level with the reception area, the dinner and breakfast area, and four handicapped accessible rooms. On the lower floor the bar and back-of-house functions will be placed. The floor above the plaza level will contain rooms for guests, and a new floor added above the existing structure will contain the rest of the guest rooms.

### TRANSFORMATION OF AN EXISTING BUILDING INTO AN ICON

This design of the hotel retains and carefully restores the existing historical architecture while integrating a contemporary façade design that will act as a local icon to the neighborhood

and attract visitors. The volume of the building is designed to fit the required program while being sensitive to the local architecture and remaining below the maximum allowed building height. The construction will entail traditional masonry construction and an added exterior ornamental metal façade that is based on the local tradition of using ironwork grills on the outside of windows for shading and privacy. This outer ornamental façade will be designed to give the building an iconic yet local appearance and a distinct day/night effect. While during the day, the façade will provide shade and cooling, at night it will provide a focal point and exude a warm glowing effect that

Street level bridge



# CULTURAL DESTINATION



Street level river 2

## Team:

Anna Klingmann, Ling Zhong, Fidelma Hawney, Chelsea Zhou, Andrew Apell, Jerome Williams, Malgorzata Jasione, Nikolaos Akarepis, Yvette Elfawal, Tom Grubbs, Matthew Tehan

Project: **Bin Landoun**

Location: **Fez, Morocco**

Company: **Klingmann**

**Architects + Brand**

**Consultants (KABC)**

will attract visitors and artisans to the plaza. The façade will be designed in collaboration with a local artist and - made of copper - will be virtually maintenance-free and age gracefully over time. The inner façade will be an extension of the existing building and consist of masonry construction with double glass doors inserted at each of

the guest rooms that are lined with decorative wooden shutters for shade, light filtration and privacy. Between the two layers of the façade, each guest will have access to a private outdoor terrace. The building will be renovated and constructed by local artisans using techniques and methods familiar to the area.



Street level plaza